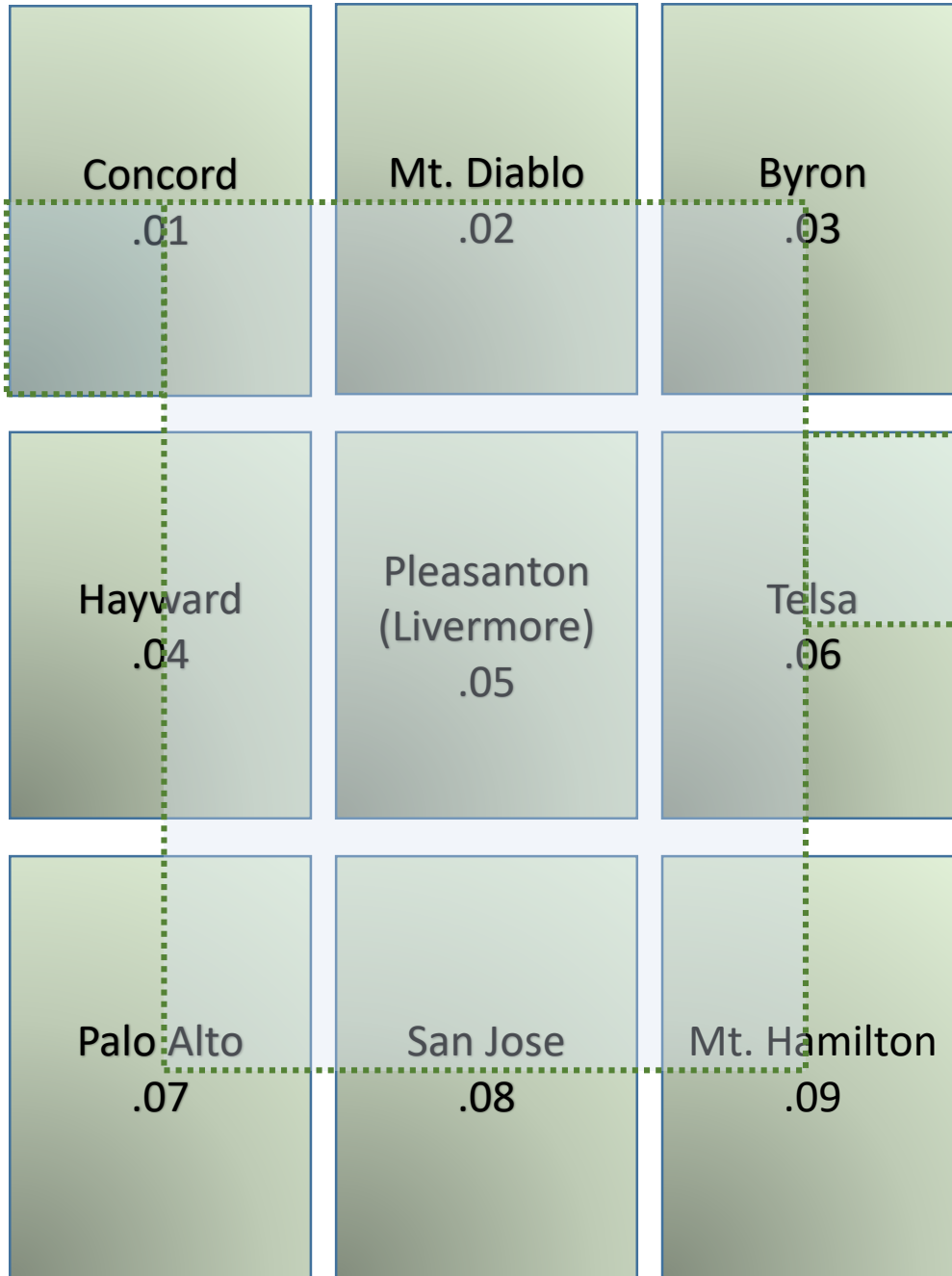


North



South

2021.02.xx

Topographic Quadrangle Maps

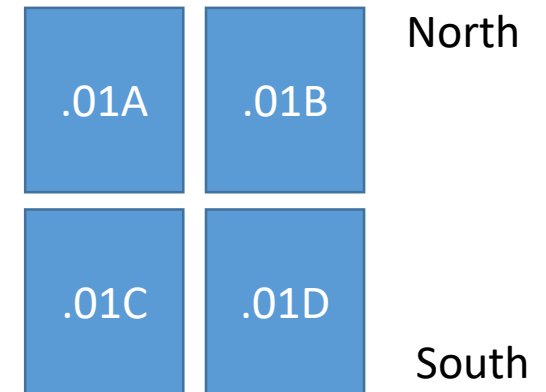
Set of nine. Pleasanton in center.

Received at Camp Parks 6/28/1943

Donated by Mark Santos, 1/2021

Selective Partial Scans on Next Pages
(Generally North to South)

Each quadrangle scanned as 8x11 quarters:



BERKELEY

.01C

PIEDMONT

OAKLAND

ALAMEDA ISLAND

ALAMO

DANVILLE

.01D



6/1915, 1939 reprint

ALAMO



.01D

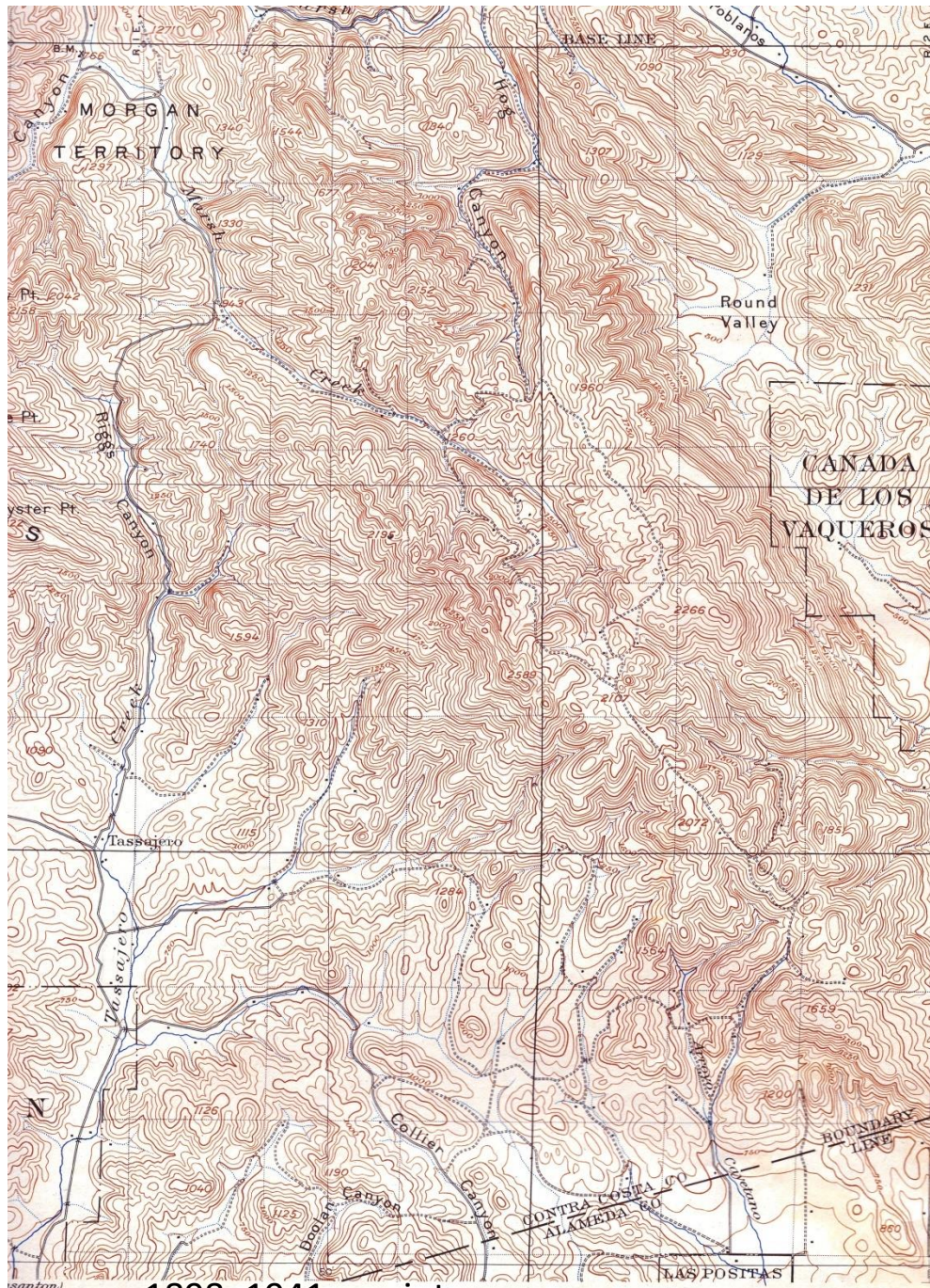
.02C

6/1915, 1939 reprint

1898, 1941 reprint

R.U. Goode, Geographer in charge

Scale



1898, 1941 reprint

.02D



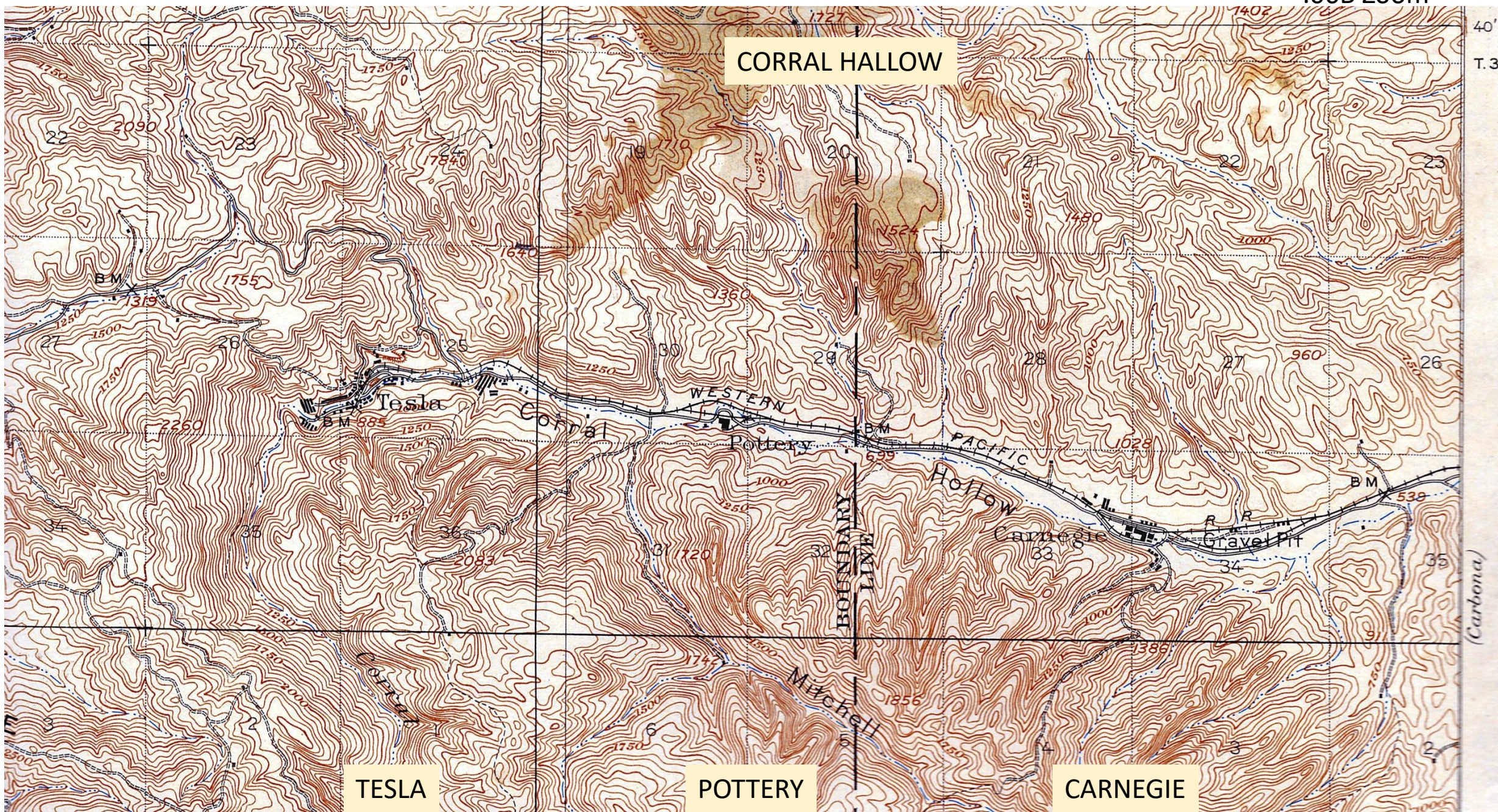
1916, 1941 reprint

BYRON

.03C

BRUSHY PEAK

CORRAL HALLOW

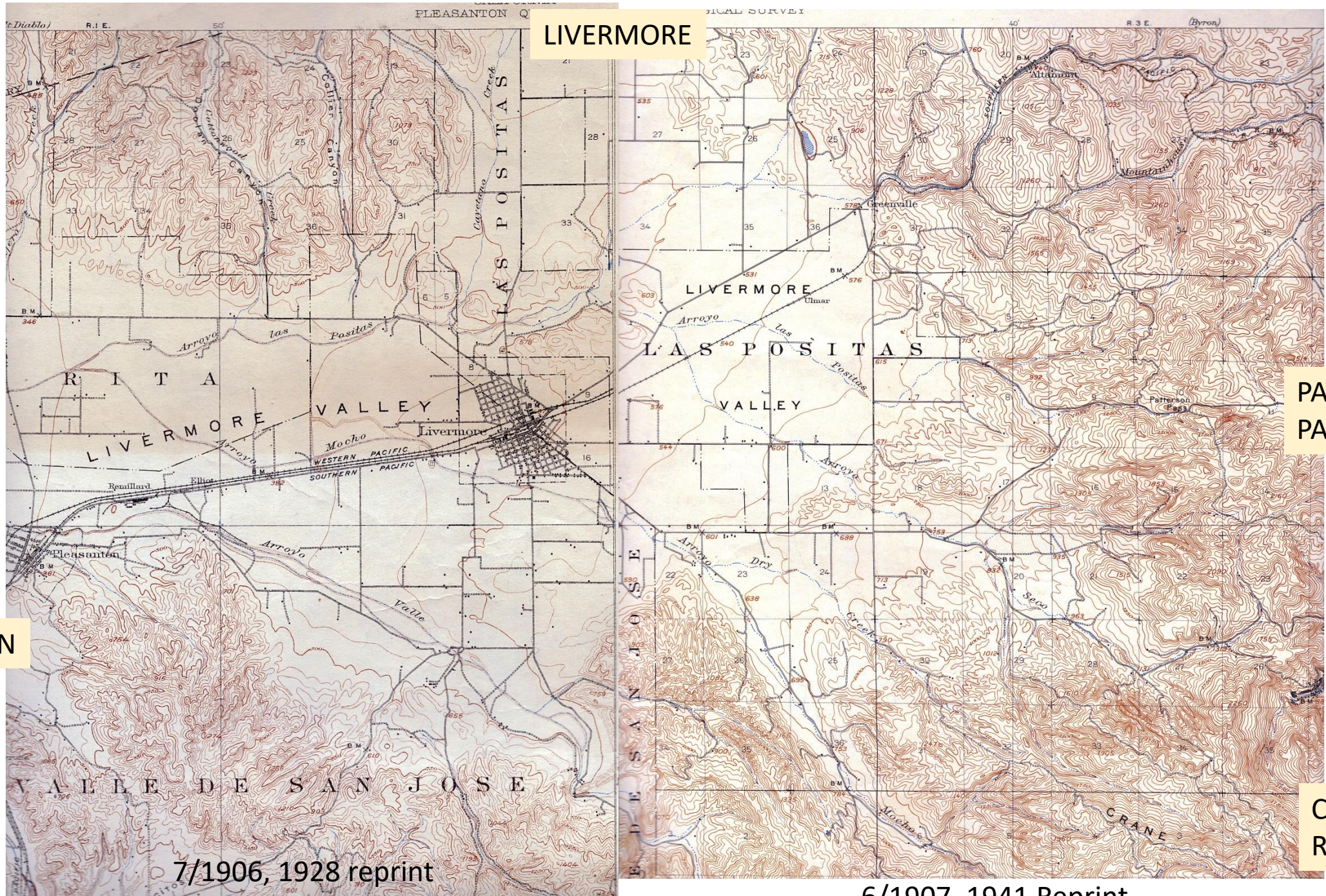


TESLA

POTTERY

CARNEGIE

(Carbena)



LIVERMORE

.05B

.06A

PATTERSON PASS

PLEASANTON

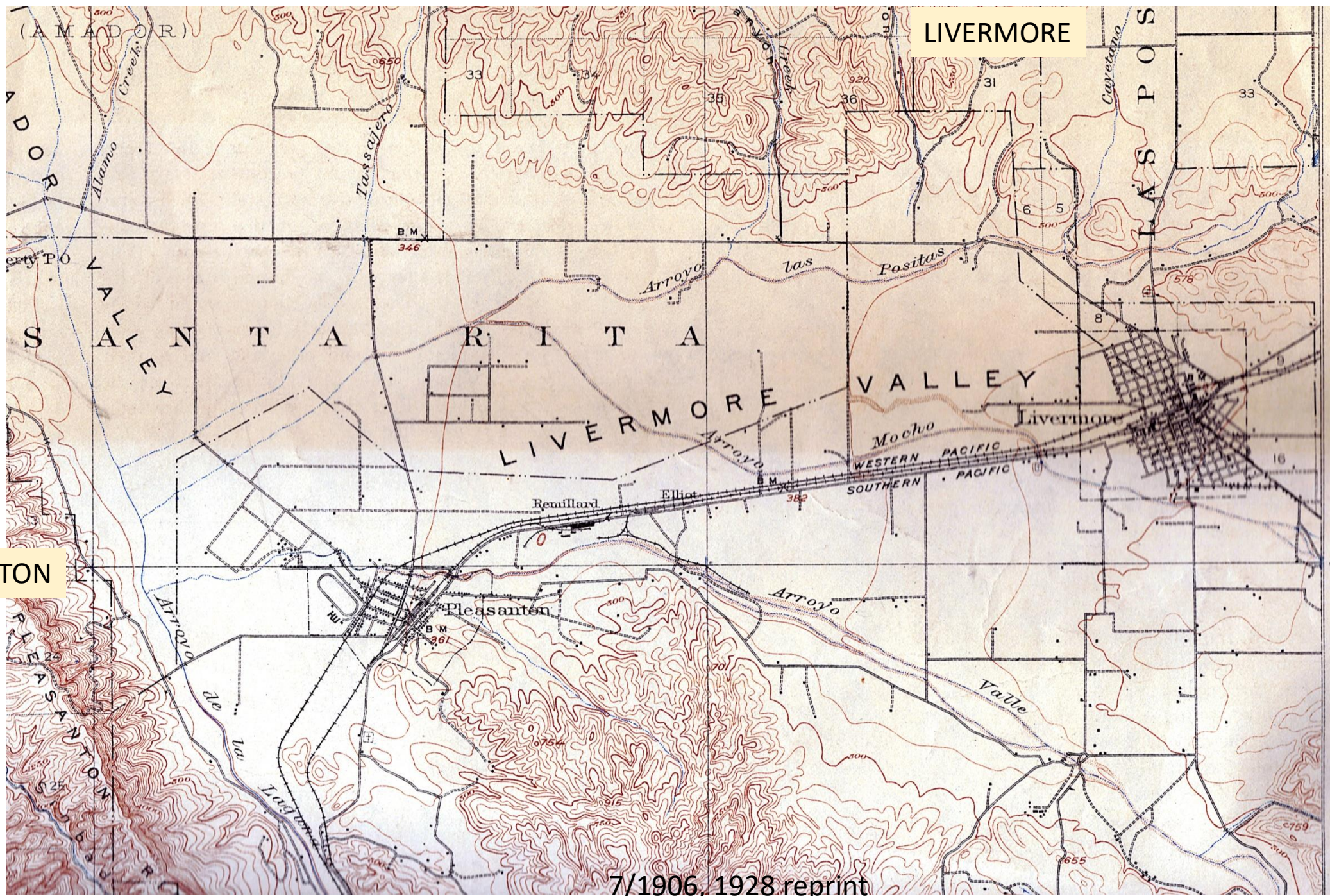
CRANE RIDGE

7/1906, 1928 reprint

6/1907, 1941 Reprint

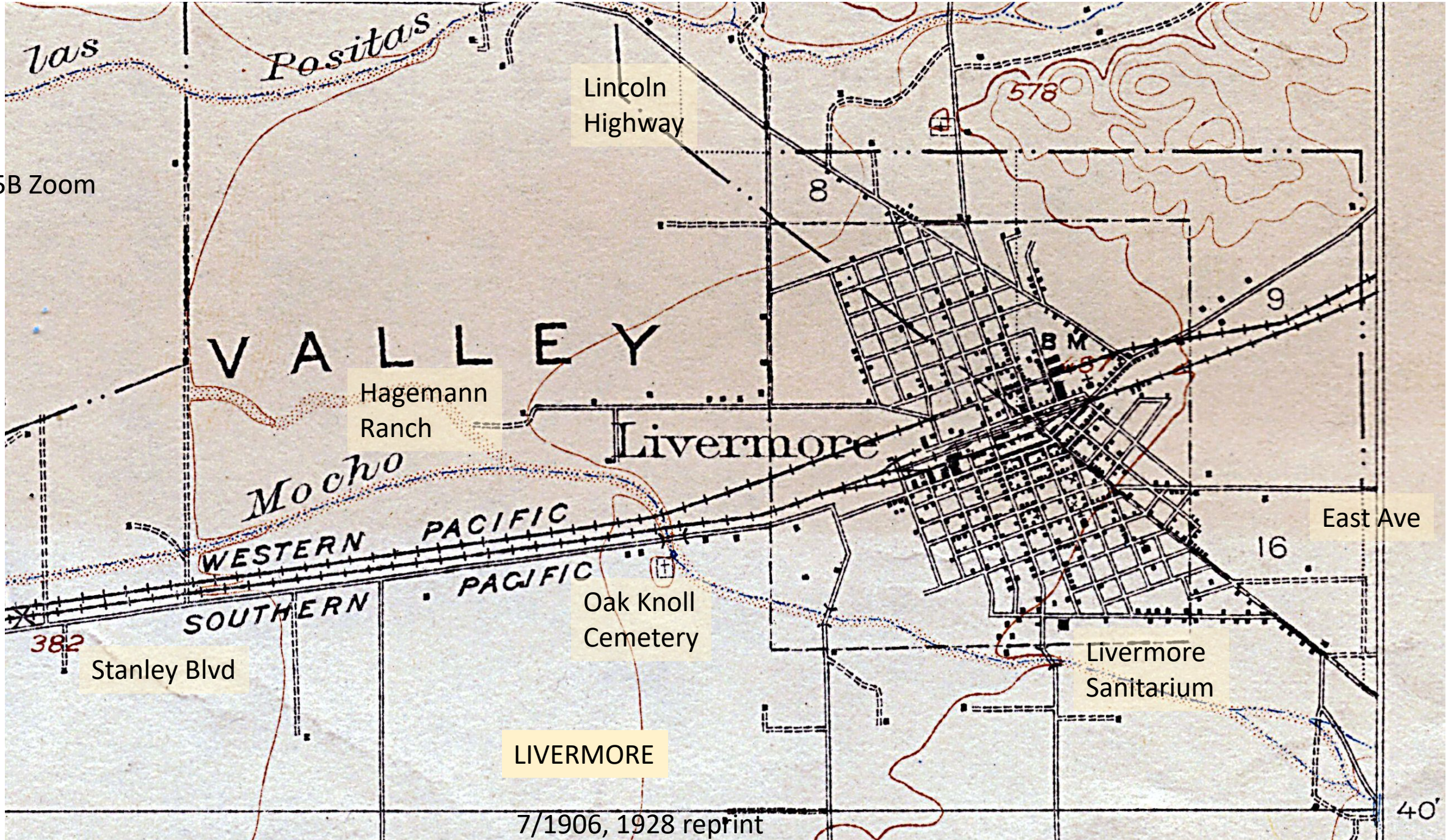
PLEASANTON

LIVERMORE



7/1906, 1928 reprint

.05B



.05B Zoom

Lincoln Highway

V A L L E Y

Hagemann Ranch

Livermore

Mochos

WESTERN PACIFIC
SOUTHERN PACIFIC

Oak Knoll Cemetery

East Ave

Livermore Sanitarium

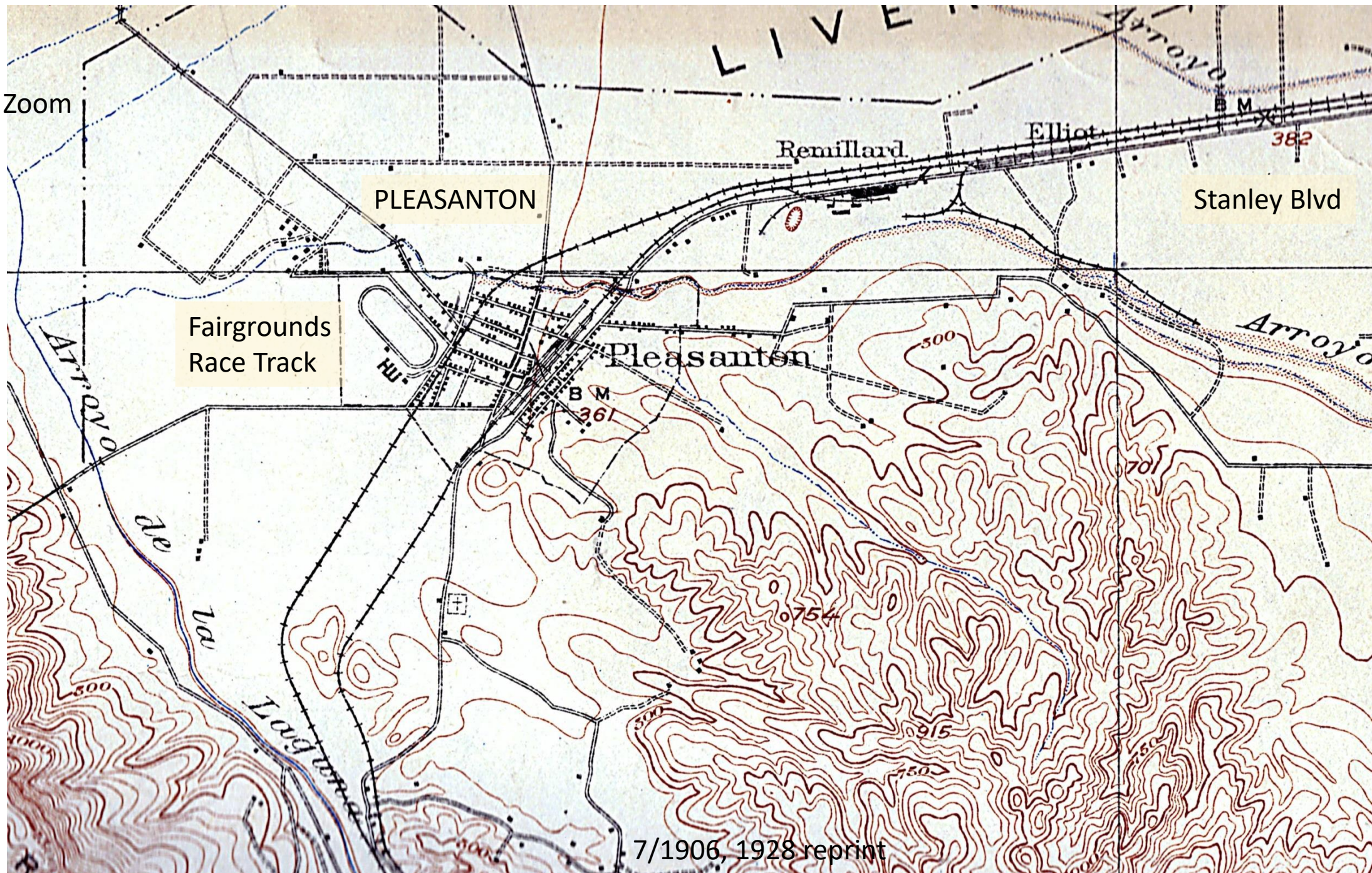
Stanley Blvd

LIVERMORE

7/1906, 1928 reprint

40'

.05A Zoom



7/1906, 1928 reprint

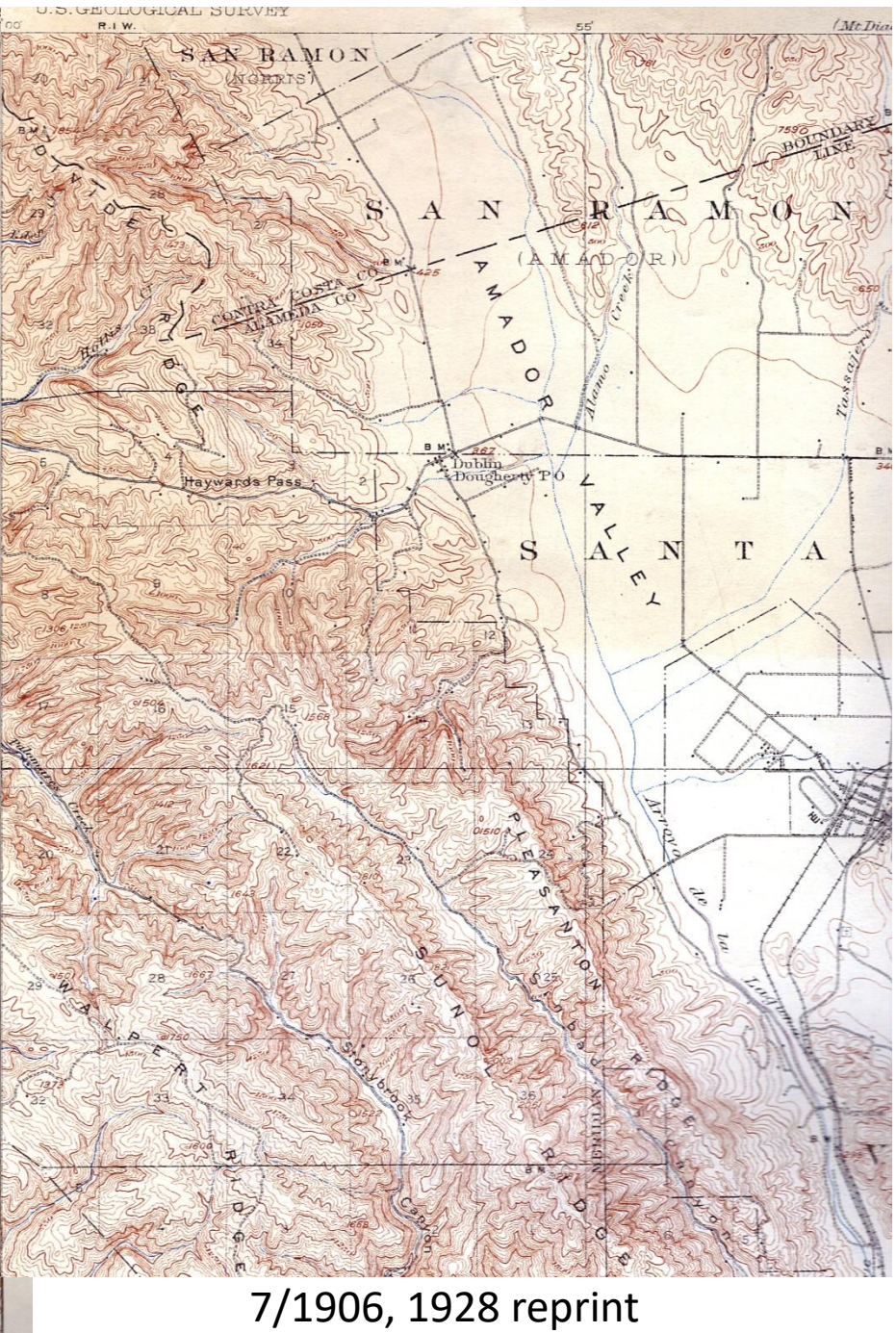


CASTRO
VALLEY

.04B

HAYWARD

1915, 1939 reprint



DUBLIN

.05A

PLEASANTON

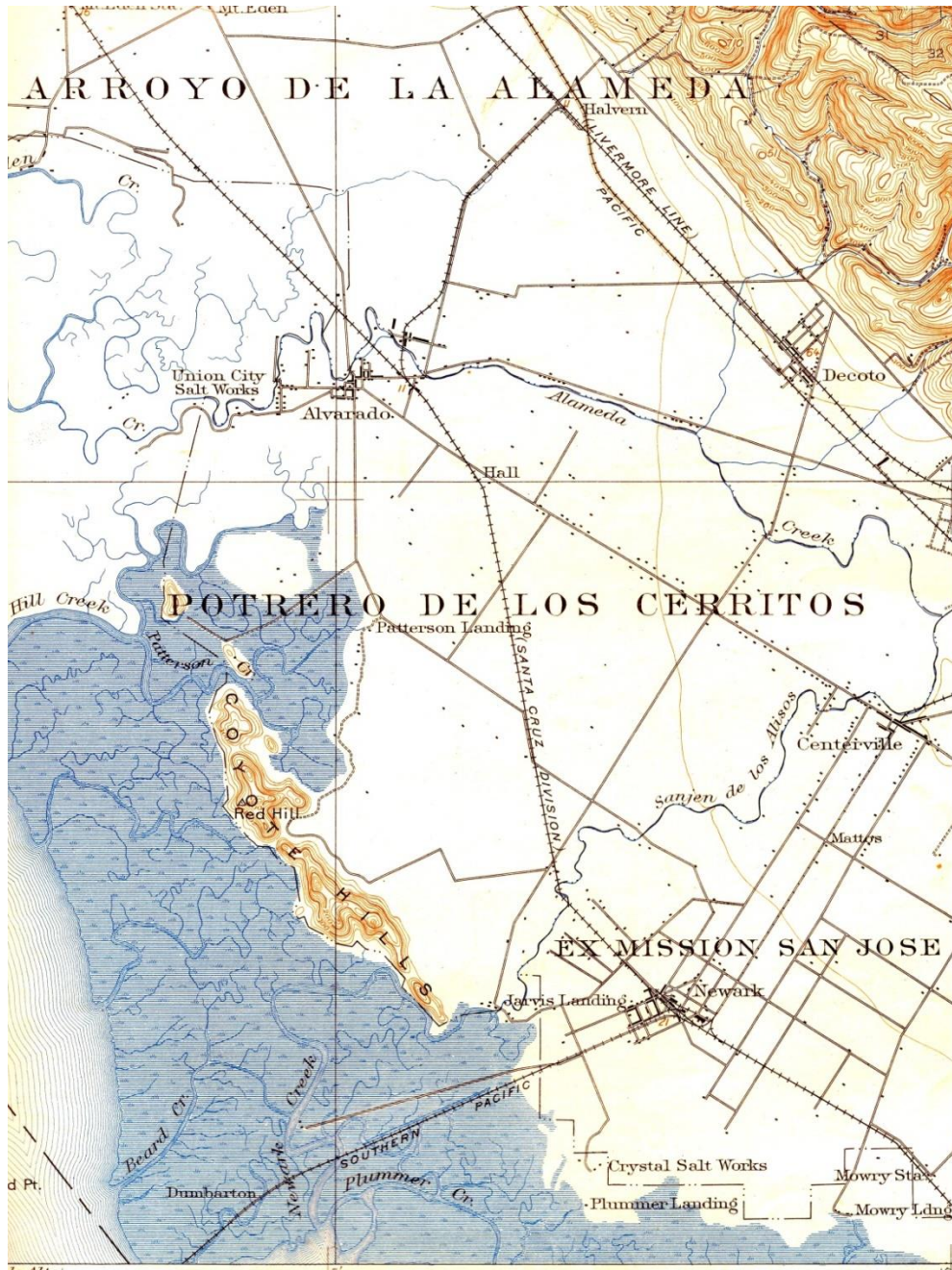
SUNOL

7/1906, 1928 reprint

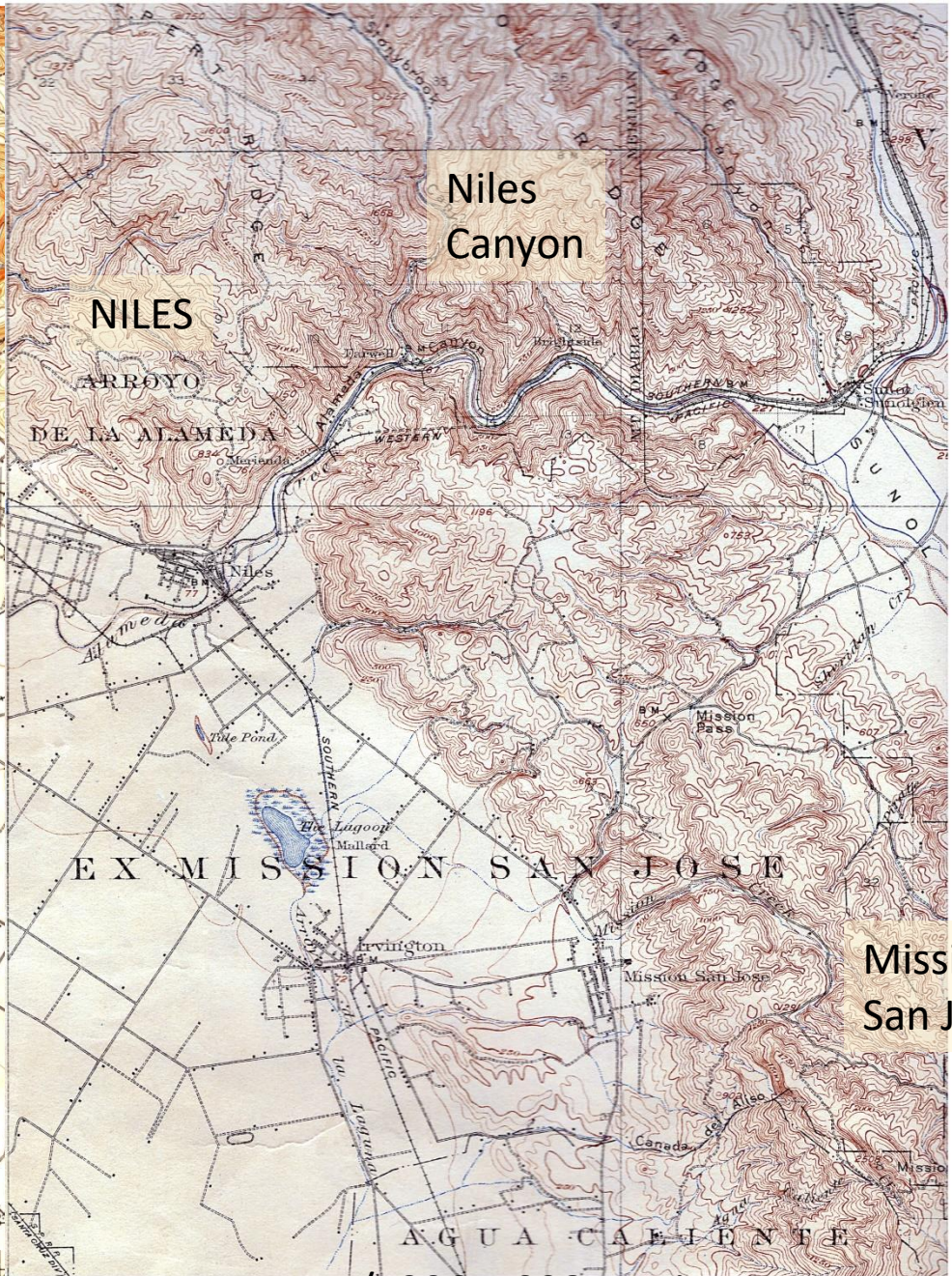
UNION CITY

.04D

NEWARK



1915, 1939 reprint

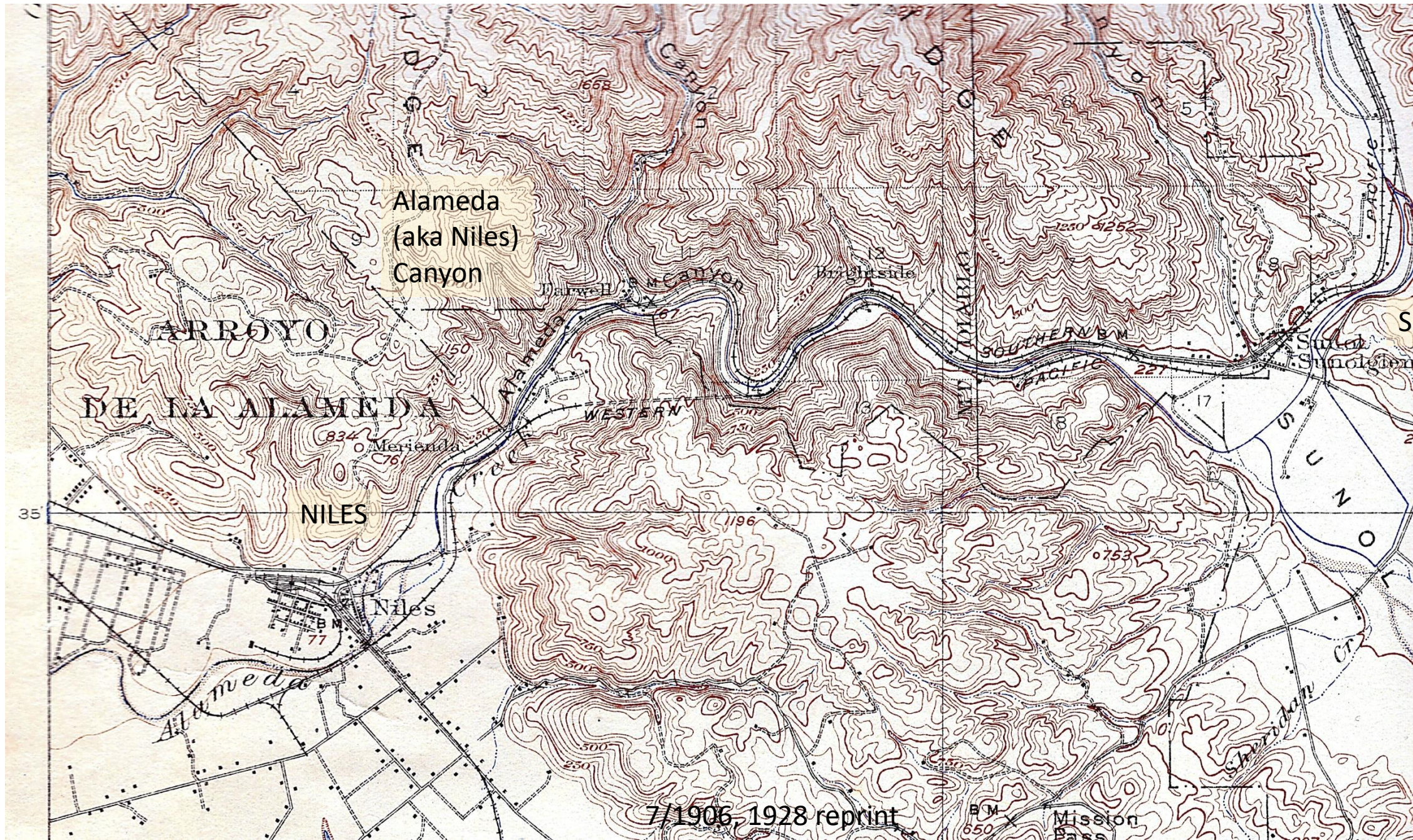


7/1906, 1928 reprint

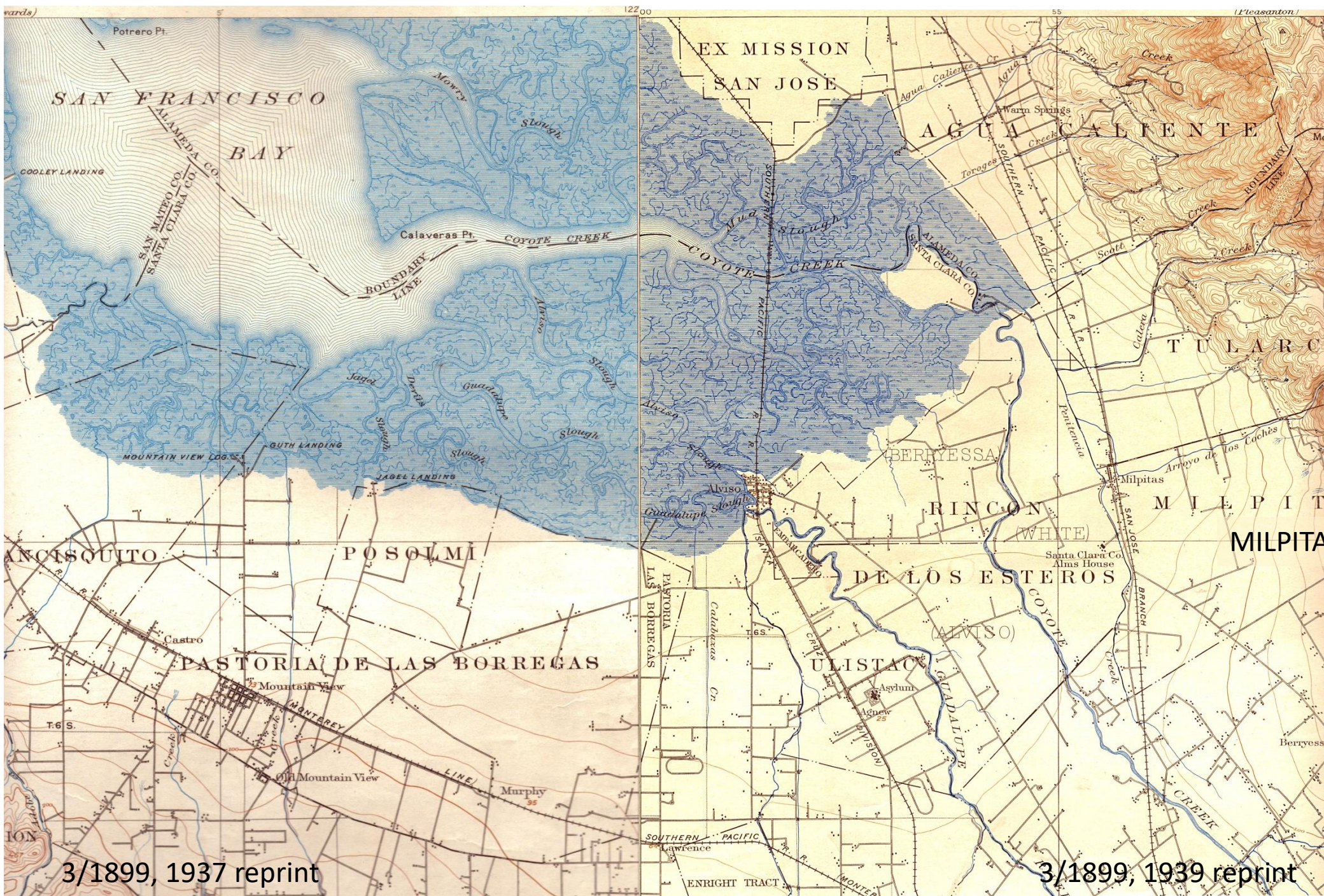
SUNOL

.05C

Mission San Jose



SUNOL



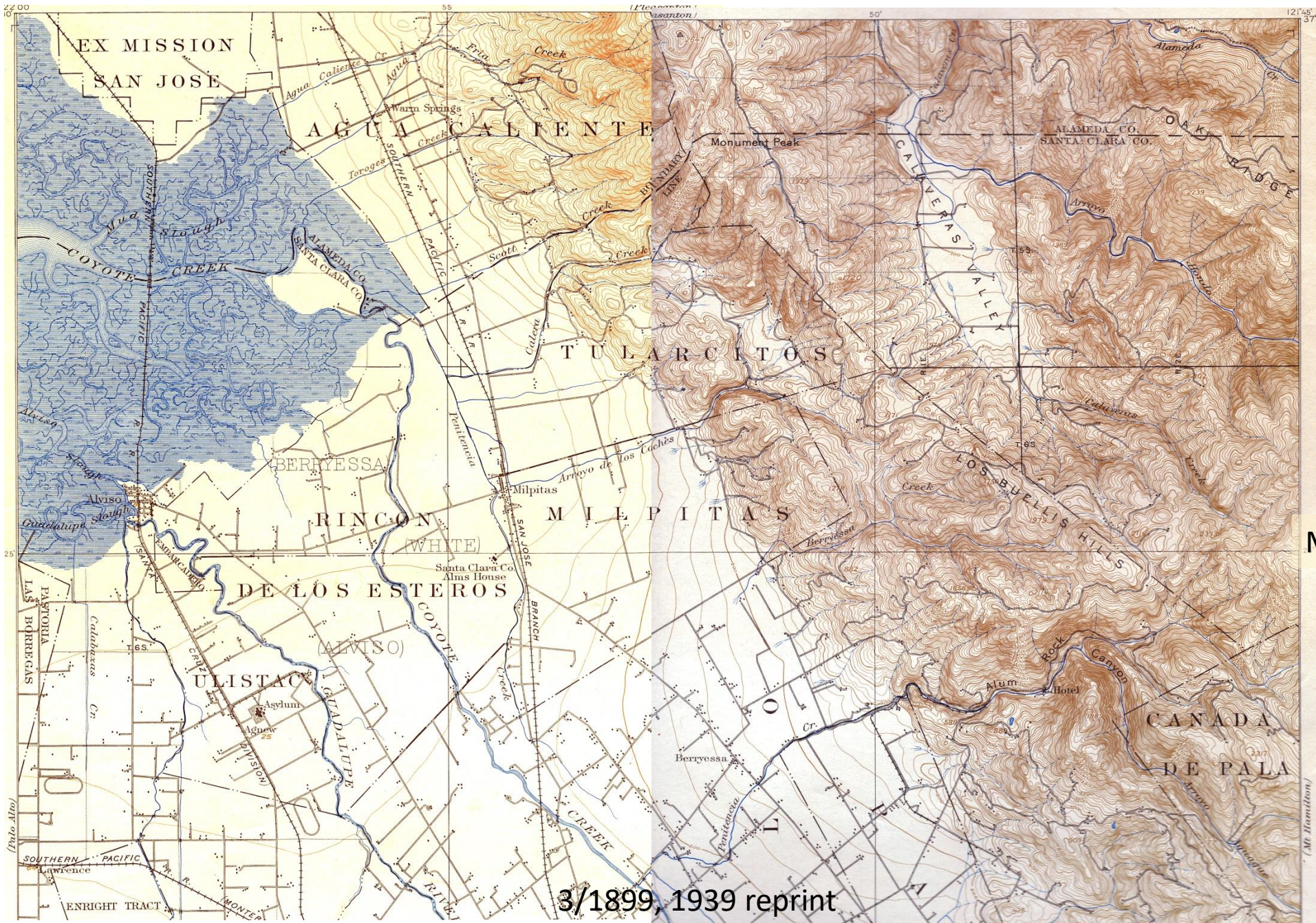
.07B

.08A

MOUNTAIN
VIEW

3/1899, 1937 reprint

3/1899, 1939 reprint



.08A

.08B

MILPITAS

3/1899, 1939 reprint

.08B



MILPITAS

3/1899, 1939 reprint

.09A



8/1897, 1932 reprint