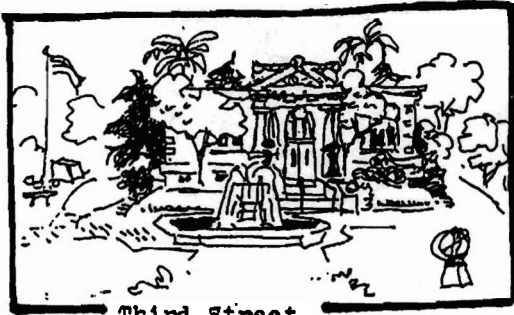


Fourth Street

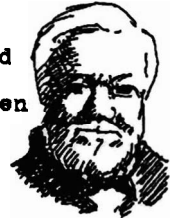


Third Street

C A R N E G I E P A R K

Carnegie Park is located in the oldest section of Livermore on a block between Third and Fourth Streets and J and K Streets.

An 1889 map of Livermore shows the clock with a building in the center, which was a slaughter house.



ANDREW
CARNEGIE
(1835-1919)

The city of Livermore purchased the block for a library and park. In 1911 the library building was built with a grant of \$10,000. from Andrew Carnegie. This building served as the city library until 1966 when a new library was built on Livermore Avenue.

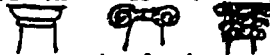
Andrew Carnegie was born in Scotland. He entered the United States as a poor boy and became one of the world's richest men. He gave money to build almost 3,000 libraries all over the world.

At one time there was a cannon on the east side of the park. It is thought that the cannon was collected in a metal drive during World War II when scrap metal was melted for weapons.

CAN YOU FIND THE FOLLOWING:

Look carefully at the front of the building. There are many designs that were popular at the time this building was built.

- Find the lion heads at the top of the building.
- Which of these Greek designs were used on the columns?



- Find the ornate design on the green light standards.

Find the plaque that tells about the fountain...

- Who was the architect?
- What kind of stone was used?

- Notice the many trees in the park. Two kinds that were popular around 1900 are found in the park.

Deodor



Palm



How many can you find?

Deodors _____ Palms _____

- Walk the red brick path and find the brick imprinted with LIVERMORE. At one time there were several brick factories in Livermore. Is the same color brick used on the building? _____
- Find Livermore's memorial to local men who died while in military service during the wars. How many wars are listed? _____ Which war had the most deaths? _____
- A park caretaker was sad when one of the trees died. He made it into a sculpture. Can you find it? It is rooted into the ground. He also made the interesting benches nearby.
- Find the unusual sundial sculpture. It is made of metal. Can you tell the time of day from it?